

## COXDOME FLAT GLASS

The Coxdome Flat Glass distinguishes itself from other modular units by the uninterrupted glass surface which offers pure natural daylight and clear panoramic views internally whilst providing a clean appearance in the external roof scape.

The aluminium frame profile is slim and isolated internally for thermal performance. The toughened outer glass panel has ceramic edge coating for a stylish finish.

The unit is fixed and can be installed onto a builder's kerb, or preformed upstand. The fixing screws are concealed with a flush cover making them invisible.

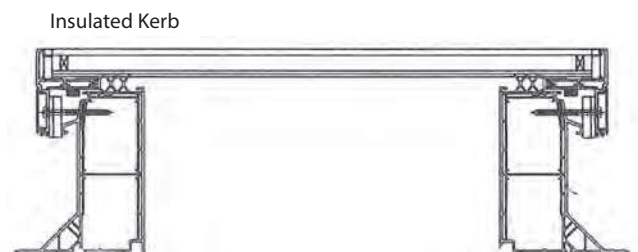


External Kerb Size (mm)	Daylight Size RO16 Upstand (mm)	Daylight Size Builders Upstand (mm)
750 x 750	600 x 600	650 x 650
900 x 900	750 x 750	800 x 800
900 x 1200	750 x 1050	800 x 1100
1000 x 1000	850 x 850	900 x 900
1000 x 1500	850 x 1350	900 x 1400
1000 x 1800	850 x 1650	900 x 1700
1000 x 2000	850 x 1850	900 x 1900
1200 x 1200	1050 x 1050	1100 x 1100
1500 x 1500	1350 x 1350	1400 x 1400

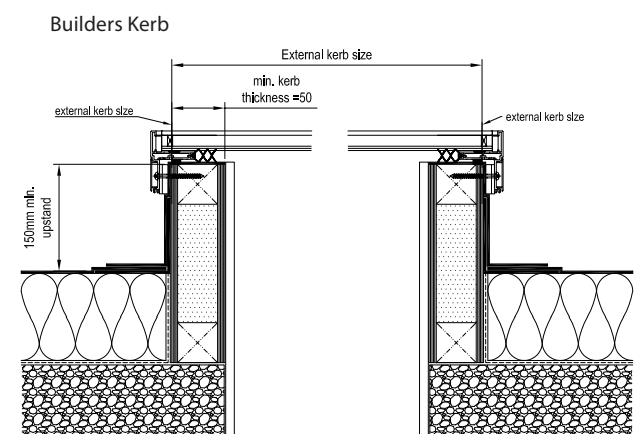
Product Specification	
Installation Angle	0 - 7°
Installation	Screws with cover strip

Glass Specification	
Glass Assembly (minimum)	6mm toughened external with black ceramic print / argon filled cavity / 8.4mm laminated. Low E glass
Insulation	HR++
Insulation	U <sub>g</sub> = 1.0 Wm <sup>2</sup> K
Spacer	Warm edge spacer
Injury Safety according to EN 12600	1B1
LTA / ZTA	App. 69% / 49%
Sound Insulation (R <sub>w</sub> )	App. 35dB

Frame Specification	
Frame	Aluminium
Coating	Powder coated aluminium slate grey (RAL 7015)
Drainage	At each corner of the frame
Waterproof Welded	At each corner of the frame



Insulated Kerb



Builders Kerb